

Component-Level Information Packet
for 08590-60180 & 08591-60017
Motherboard

Copyright © 1991 Hewlett-Packard Company

All Rights Reserved.
Reproduction, adaptation, or translation
without prior written permission
is prohibited, except as allowed
under the copyright laws.

HP Document Part Number 08591-90014

Printed September 1990
Printed in USA

The information contained in this document is subject to change
without notice.



**HP Part Number 08590-60180 & 08591-60017
Motherboard**

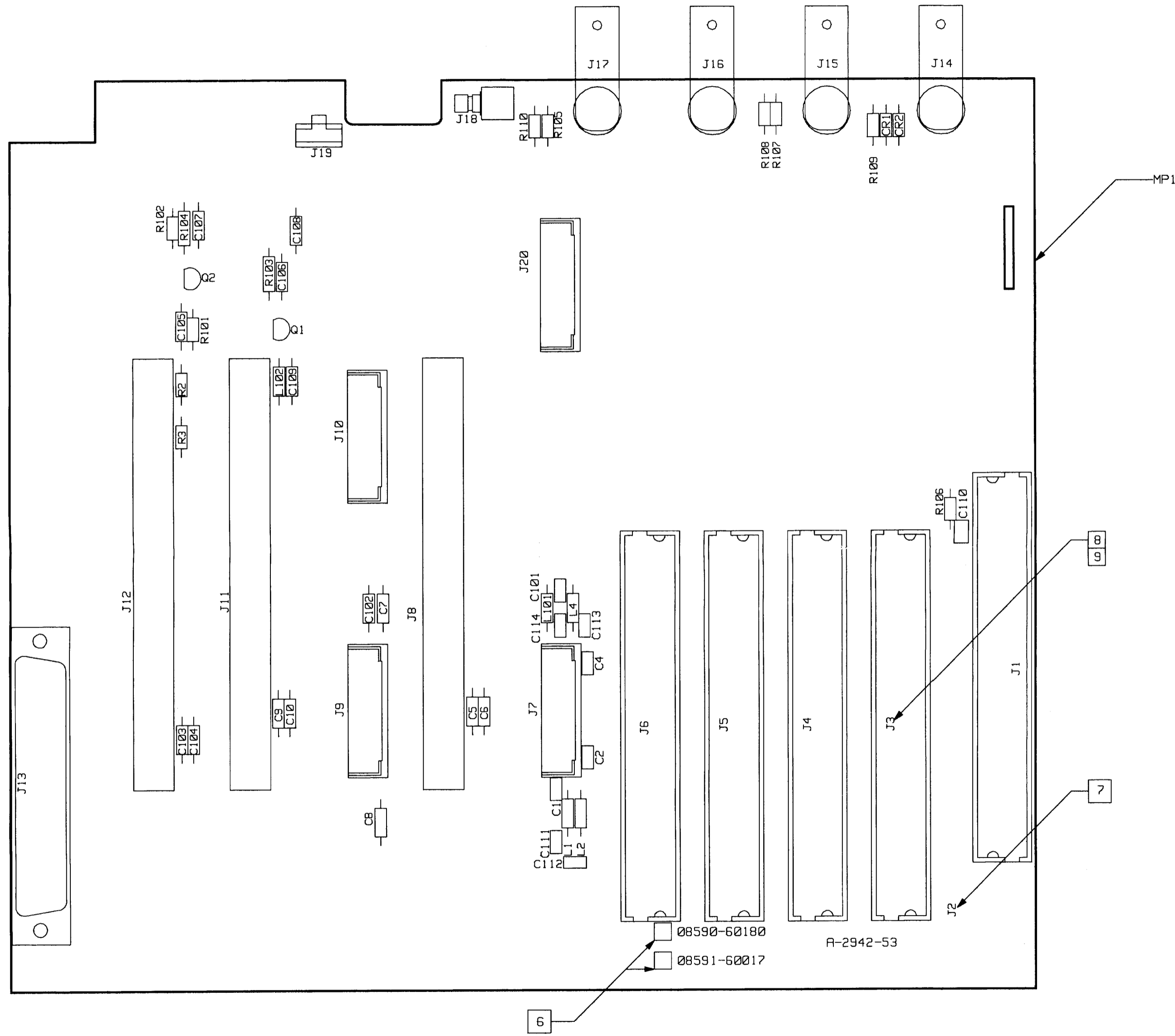
Reference Designation	HP Part Number	C	D	Qty	Description	Mfr Code	Mfr Part Number
C1	0160-3879	7		1	CAP-FXD 0.01uF 100 V	02010	SR201C103MAAH
C2	0160-3879	7		1	CAP-FXD 0.01uF 100 V	02010	SR201C103MAAH
C4	0160-3879	7		1	CAP-FXD 0.01uF 100 V	02010	SR201C103MAAH
C5	0160-4832	4		1	CAP-FXD 0.01uF 100 V	02010	SA101C103KAAH
C6	0160-4832	4		1	CAP-FXD 0.01uF 100 V	02010	SA101C103KAAH
C7	0160-4832	4		1	CAP-FXD 0.01uF 100 V	02010	SA101C103KAAH
C8	0160-4832	4		1	CAP-FXD 0.01uF 100 V	02010	SA101C103KAAH
C9	0160-4832	4		1	CAP-FXD 0.01uF 100 V	02010	SA101C103KAAH
C10	0160-4832	4		1	CAP-FXD 0.01uF 100 V	02010	SA101C103KAAH
C101	0160-3879	7		1	CAP-FXD 0.01uF 100 V	02010	SR201C103MAAH
C102	0160-4832	4		1	CAP-FXD 0.01uF 100 V	02010	SA101C103KAAH
C103	0160-4832	4		1	CAP-FXD 0.01uF 100 V	02010	SA101C103KAAH
C104	0160-4832	4		1	CAP-FXD 0.01uF 100 V	02010	SA101C103KAAH
C105	0160-4832	4		1	CAP-FXD 0.01uF 100 V	02010	SA101C103KAAH
C106	0160-4832	4		1	CAP-FXD 0.01uF 100 V	02010	SA101C103KAAH
C107	0160-4832	4		1	CAP-FXD 0.01uF 100 V	02010	SA101C103KAAH
C108	0160-4832	4		1	CAP-FXD 0.01uF 100 V	02010	SA101C103KAAH
C109	0160-4832	4		1	CAP-FXD 0.01uF 100 V	02010	SA101C103KAAH
C110	0160-4386	3		1	CAP-FXD 33pF 200 V	02010	SR152A330JAA
C111	0160-4386	3		1	CAP-FXD 33pF 200 V	02010	SR152A330JAA
C112	0160-4386	3		1	CAP-FXD 33pF 200 V	02010	SR152A330JAA
C113	0160-4386	3		1	CAP-FXD 33pF 200 V	02010	SR152A330JAA
C114	0160-4386	3		1	CAP-FXD 33pF 200 V	02010	SR152A330JAA
CR1	1901-0050	3		1	DIODE-SWITCHING 80V 200MA 2NS DO-35	03334	BAV10 SELECTED
CR2	1901-0050	3		1	DIODE-SWITCHING 80V 200MA 2NS DO-35	03334	BAV10 SELECTED
J1	1251-8911	2		1	CONN-POST TYPE .100-PIN-SPCG 60-CONT	01380	534978-9
J2	1252-2909	8		1	CONN-POST TYPE .100-PIN-SPCG 60-CONT	01380	2-103168-8
J7	1252-2908	7		1	CONN-POST TYPE .100-PIN-SPCG 20-CONT	01380	1-102318-1
J8	1251-1365	6		1	CONNECTOR-PC EDGE 22-CONT/ROW 2-ROWS	03394	220-626-03
J9	1252-2908	7		1	CONN-POST TYPE .100-PIN-SPCG 20-CONT	01380	1-102318-1
J10	1252-2908	7		1	CONN-POST TYPE .100-PIN-SPCG 20-CONT	01380	1-102318-1
J11	1251-1365	6		1	CONNECTOR-PC EDGE 22-CONT/ROW 2-ROWS	03394	220-626-03
J12	1251-1365	6		1	CONNECTOR-PC EDGE 22-CONT/ROW 2-ROWS	03394	220-626-03
J13	1251-8995	2		1	CONN-RECT D-SUBMIN 37-CKT 37-CONT	01380	747375-2
J14	1250-1846	6		1	CONNECTOR-RF BNC FEM PC 50-OHM	01380	87-3331-014
J15	1250-1846	6		1	CONNECTOR-RF BNC FEM PC 50-OHM	01380	87-3331-014
J16	1250-1846	6		1	CONNECTOR-RF BNC FEM PC 50-OHM	01380	87-3331-014
J17	1250-1846	6		1	CONNECTOR-RF BNC FEM PC 50-OHM	01380	87-3331-014
J18	1250-0543	8		1	CONNECTOR-RF SM-SNP M PC 50-OHM	05769	51-053-0349-BE8
J19	1252-2153	4		1	CONN-POST TYPE .100-PIN-SPCG 4-CONT	02946	69167-104
J20	1252-2908	7		1	CONN-POST TYPE .100-PIN-SPCG 20-CONT	01380	1-102318-1
L1	9140-0158	6		1	INDUCTOR RF-CH-MLD 1UH +-10% .105D-INX.2	03273	10M101K
L2	9140-0158	6		1	INDUCTOR RF-CH-MLD 1UH +-10% .105D-INX.2	03273	10M101K
L4	9140-0158	6		1	INDUCTOR RF-CH-MLD 1UH +-10% .105D-INX.2	03273	10M101K
L101	9140-0158	6		1	INDUCTOR RF-CH-MLD 1UH +-10% .105D-INX.2	03273	10M101K
L102	9140-0158	6		1	INDUCTOR RF-CH-MLD 1UH +-10% .105D-INX.2	03273	10M101K
Q1	1854-0215	1		1	TRANSISTOR NPN SI TO-92 PD=625MW FT=300M	00746	2N3904
Q2	1854-0215	1		1	TRANSISTOR NPN SI TO-92 PD=625MW FT=300M	00746	2N3904

*Indicates factory-selected value

**HP Part Number 08590-60180 & 08591-60017
Motherboard**

Reference Designation	HP Part Number	C D	Qty	Description	Mfr Code	Mfr Part Number
R2	0698-7245	8	1	RESISTOR 2.37K +-1% .05W TF TC=0+-100	00746	CRB20
R3	0698-7222	1	1	RESISTOR 261 +-1% .05W TF TC=0+-100	00746	CRB20
R101	0698-7246	9	1	RESISTOR 2.61K +-1% .05W TF TC=0+-100	00746	CRB20
R102	0698-7253	8	1	RESISTOR 5.11K +-1% .05W TF TC=0+-100	00746	CRB20
R103	0698-3440	7	1	RESISTOR 196 1% .125W TF TC=0+-100	00746	CRB14 OR CRB25
R104	0698-3440	7	1	RESISTOR 196 1% .125W TF TC=0+-100	00746	CRB14 OR CRB25
R105	0698-7205	0	1	RESISTOR 51.1 +-1% .05W TF TC=0+-100	00746	CRB20
R106	0698-7205	0	1	RESISTOR 51.1 +-1% .05W TF TC=0+-100	00746	CRB20
R107	0698-7219	6	1	RESISTOR 196 +-1% .05W TF TC=0+-100	00746	CRB20
R108	0698-7219	6	1	RESISTOR 196 +-1% .05W TF TC=0+-100	00746	CRB20
R109	0698-7205	0	1	RESISTOR 51.1 +-1% .05W TF TC=0+-100	00746	CRB20
R110	0698-7205	0	1	RESISTOR 51.1 +-1% .05W TF TC=0+-100	00746	CRB20

SYM	REVISIONS	APPROVED	DATE
A			



NOTES: UNLESS OTHERWISE SPECIFIED

1. DIMENSIONS ARE IN INCHES.
2. REMOVE TABS AFTER WAVE SOLDER.
3. MAXIMUM COMPONENT HEIGHT .460.
4. MAXIMUM LEAD TRIM LENGTH .080.
5. ALL CONNECTORS MUST BE FLUSH TO BOARD SURFACE AFTER MACHINE SOLDER.
6. CHECK APPLICABLE BOX FOR DESIGNATED ASSEMBLY.
7. J2 IS MOUNTED ON FAR SIDE OF BOARD AFTER MACHINE SOLDER.
8. J3-J6 ARE NOT LOADED FOR 08590-60180 ASSY.
9. J3-J6 ARE LOADED FOR 08591-60017 ASSY.

08590-60180
08591-60017

A-2942-53

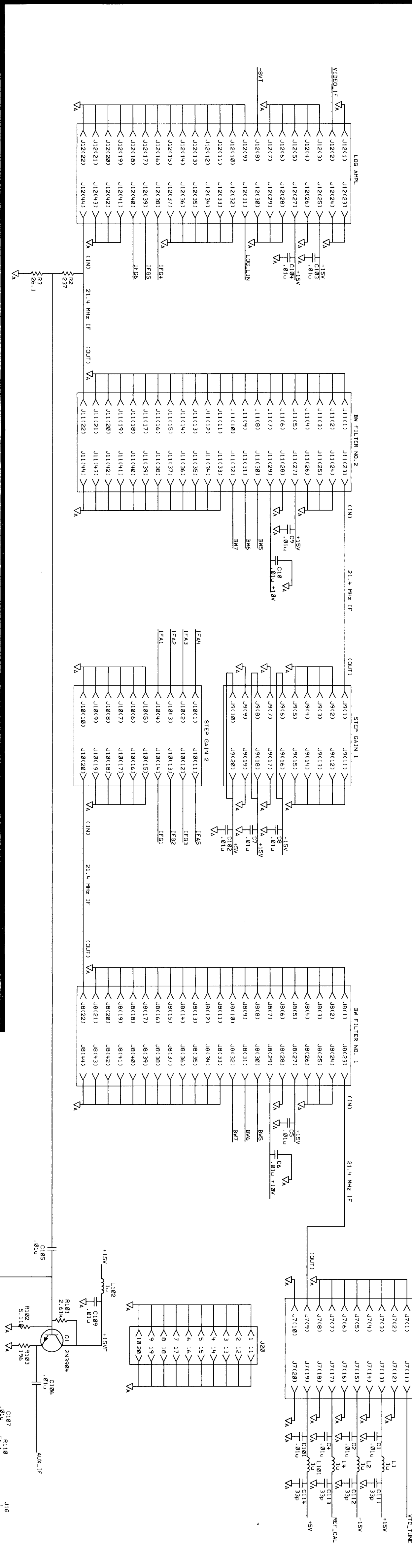
HP PROPRIETARY
THIS DOCUMENT CONTAINS CONFIDENTIAL
PROPRIETARY INFORMATION THAT IS
HEWLETT-PACKARD (HP) PROPERTY. DO
NOT DISCLOSE TO OR DUPLICATE FOR
OTHERS EXCEPT AS AUTHORIZED BY HP.

08591-60017	08591-60017	5021-9918	9
08590-60180	08590-60180	5021-9918	8
BOARD #	MATL LIST	RAW BD. #	NOTE

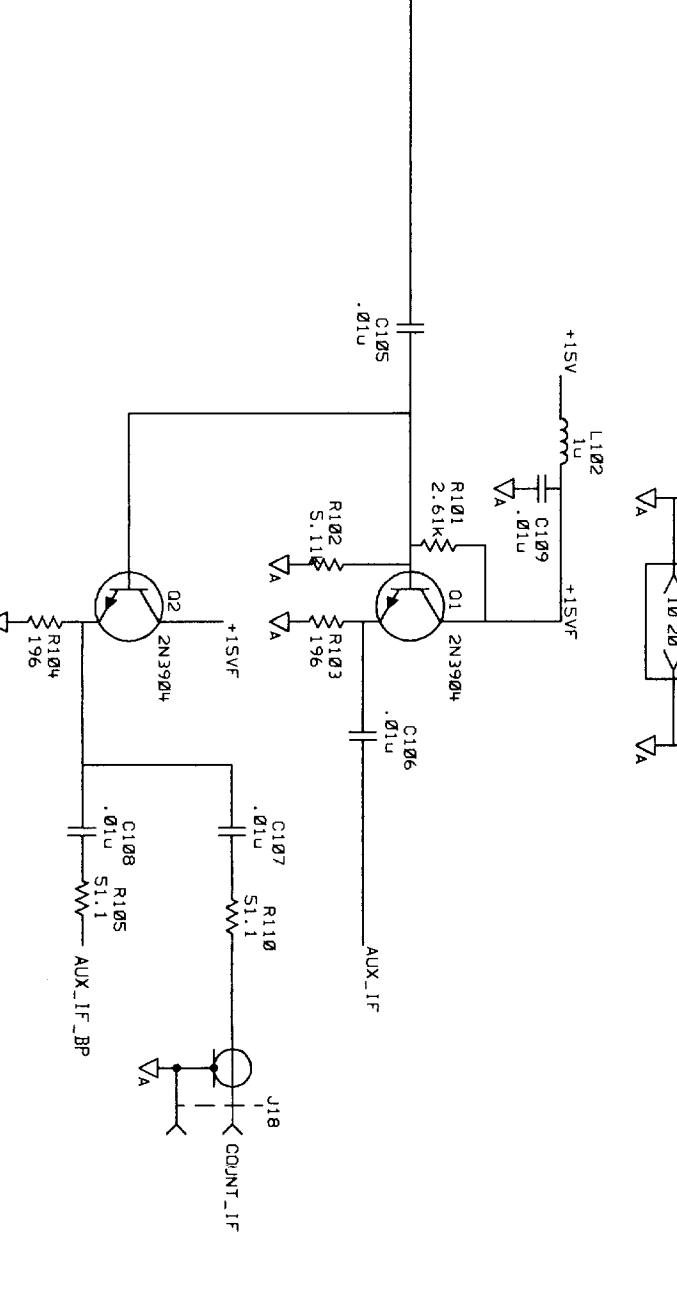
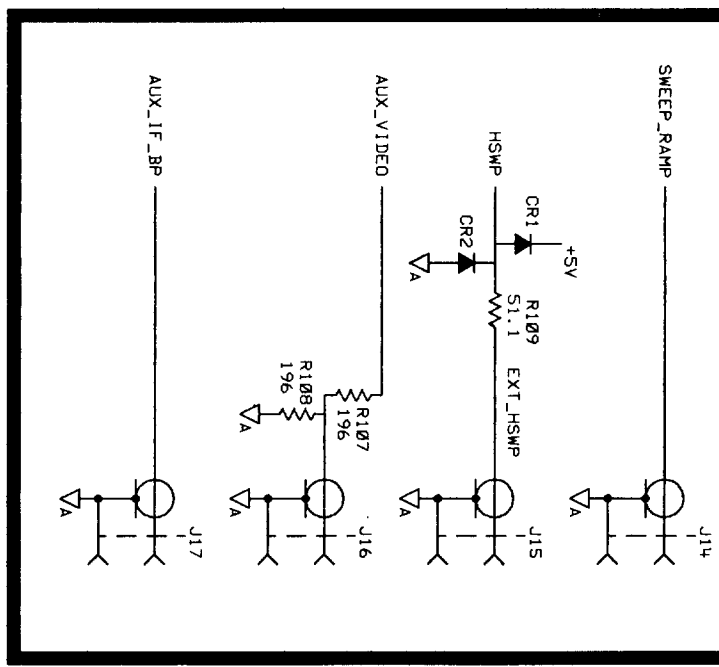
UNLESS OTHERWISE SPECIFIED, DIMENSIONS ARE IN INCHES.	DRAWN BY	DATE	BOARD ASSEMBLY- MOTHER BOARD	HEWLETT PACKARD PART NUMBER 08590-60180
TOLERANCES: XX.XXX ±.015	ENGINEER/CHECKER			
SEE CORP. STD. 808	RELEASED TO PROD.		TITLE NONE	SHEET 1 of 1 D-08590-60180-2
	SUPERSEDES ING.			

SYN	REV	DATE
A		

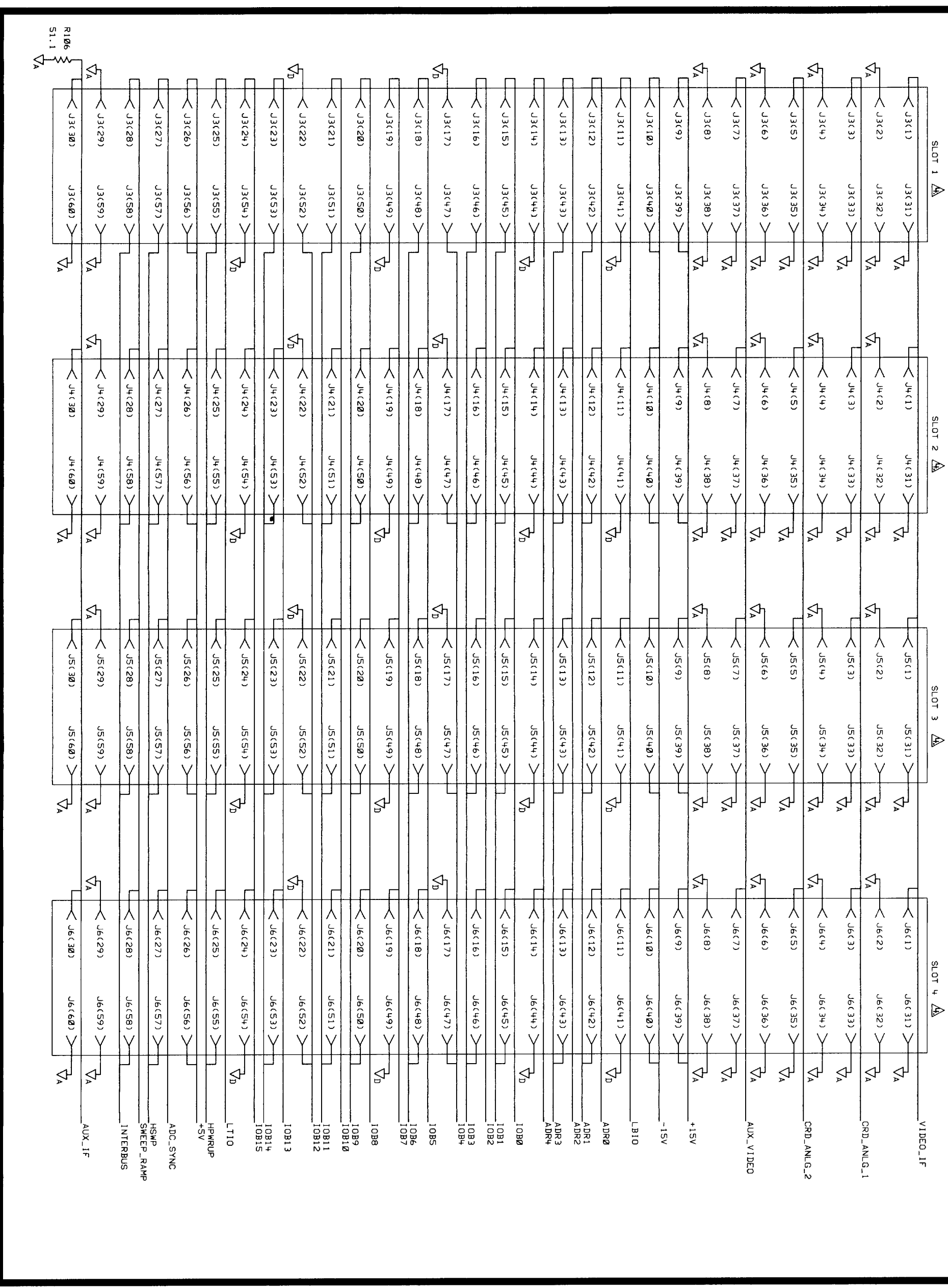
IF CONNECTIONS



BACKPANEL CONNECTORS

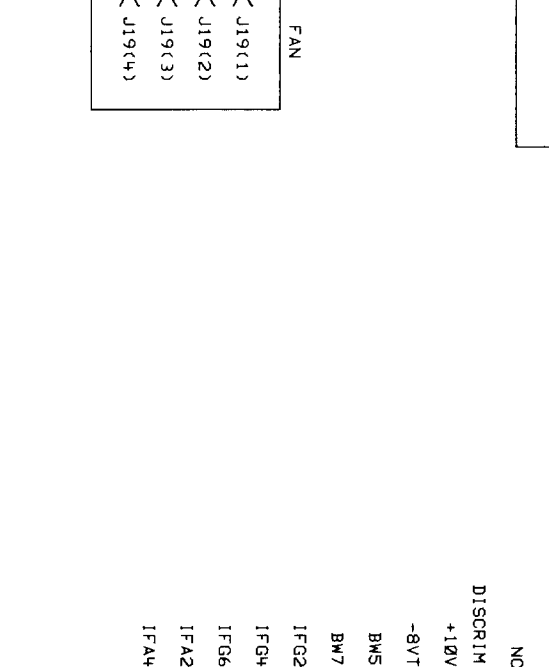


CARD CAGE



NOTES:

1. REFER TO THE DESIGNING WITHIN THIS ASSEMBLY FOR THE LOCATION OF THE COMPONENTS.
2. UNLESS OTHERWISE INDICATED, THE DIMENSIONS ARE IN MILLIMETERS (INCHES).
3. DIMENSIONS ARE IN MILLIMETERS (INCHES).



ITEM	QTY.	PART/MATERIAL-DESCRIPTION	RAW BD NUMBER = 5021-9918	HAT/L-PART NO.	HAT/L-DWG. NO.	HAT/L-SPEC.

PART NO.	MATERIAL LIST	REMARKS
08591-60017	08591-60017	ASSEMBLY NOT LAMINATED

HP PROPRIETARY
THIS DOCUMENT CONTAINS CONFIDENTIAL INFORMATION.
PROPERTY OF HP. IT IS NOT TO BE DISCLOSED OR REPRODUCED IN ANY MANNER EXCEPT AS AUTHORIZED BY HP.

DATE	BY	DESCRIPTION

08590-60180
HEWLETT
PACKARD